

Scaled data based on original data using  
LM-79-08 Approved Method: Electrical and Photometric Measurements of Solid-State  
Lighting Products

Test Report Prepared for

Cooper Lighting Solutions

(formerly Eaton)

Brand: LUMIERE

Report Number: G2-1802-569-40

Luminaire Tested: **203-SS-8LED4025-12-CS-DIFF**

Test Date: 04/05/18

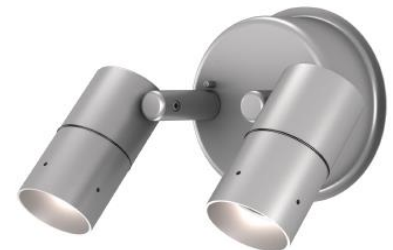
**Test Information**

Test Method: LM-79-08  
Report Number: G2-1802-569-40  
REPORT IS SCALED FROM IESNA LM-79-08 TEST DATA (G2-1802-569-40)  
Test Lab: INNOVATION CENTER(G2)  
Test Date: 04/05/18  
Issue Date: 3/3/2020  
Manufacturer: COOPER LIGHTING SOLUTIONS (FORMERLY EATON)  
Product Line: LUMIERE  
Catalog Number: 203-SS-8LED4025-12-CS-DIFF  
Description: CAMBRIA 203 LED LUMINAIRE, 8 WATT, 4000K CCT, 25 DEGREE NARROW OPTIC, REGRESSED HOOD SILVER, DIFFUSED LENS  
Light Source: (1) SORAA 4000K 90 CRI LED  
SM16-07-25D-940-03  
Ballast/Driver: (1) CHROMA POWER SUPPLY IN0004

**Summary**

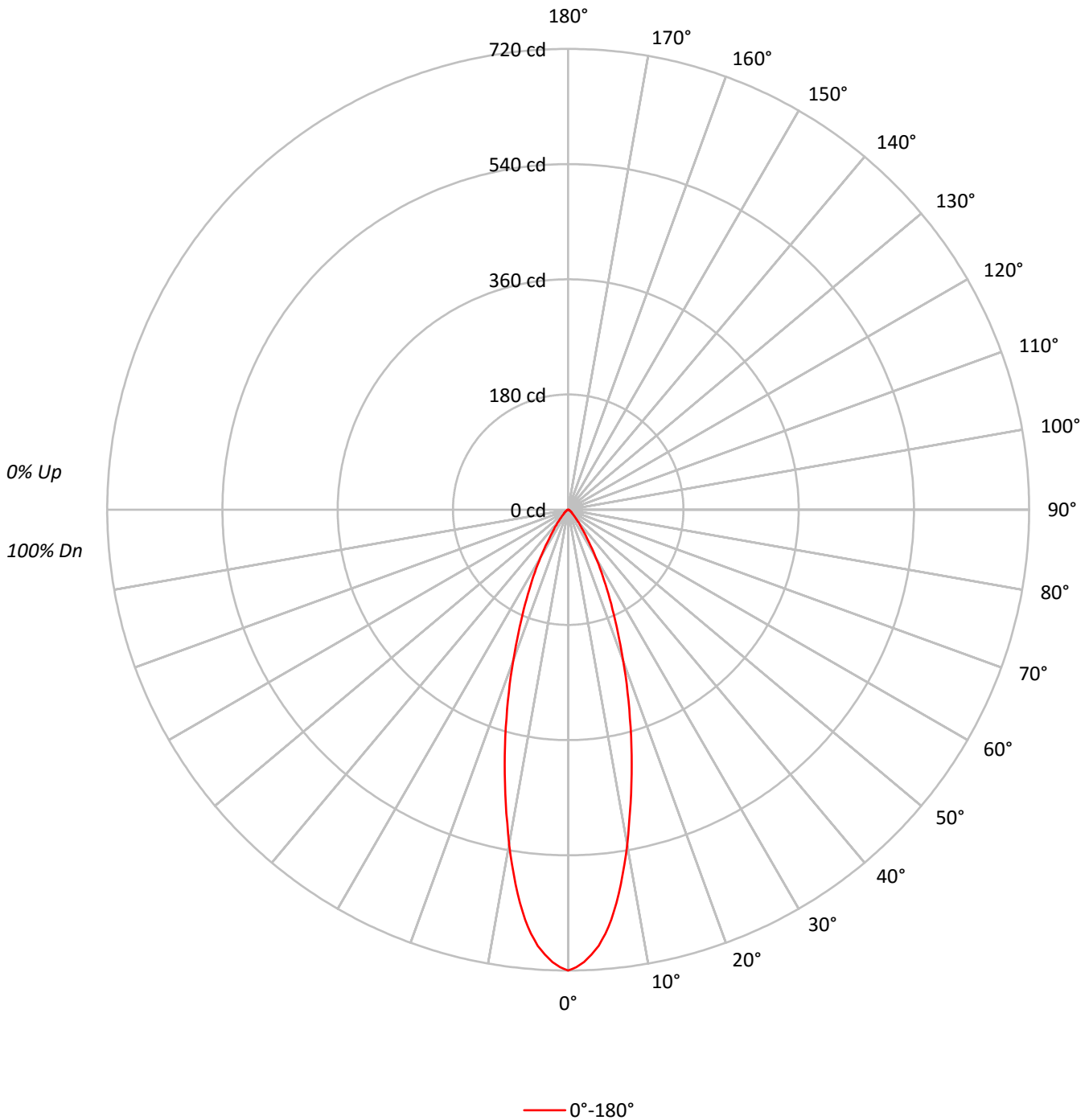
Lumens per Lamp: N/A  
Luminaire Lumens: 281.4 lumens  
Efficiency: N/A  
Efficacy: 36.1 lumens/watt  
Spacing Criteria (0/90/45): 0.52 / 0.52 / 0.55  
Luminous Opening: Circular (Dia: 0.17' x H: 0')  
CIE Type: Direct

Input Watts (W): 7.8  
Input Voltage (V): 12.0  
Input Current (A<sub>in</sub>): 0.684  
Voltage Rise (V): NR  
Power Factor: 0.9908  
Total Harmonic Distortion (THDi): 27.1%  
Frequency (hertz): 60  
Stabilization Time: 0.5 HR  
Operation Time: 3 HR  
Ambient Temperature (°C): 25.0  
Test Distance: 25 FT



TEST NUMBER: G2-1802-569-40  
CATALOG NUMBER: 203-SS-8LED4025-12-CS-DIFF

### Luminous Intensity Polar Plot





TEST NUMBER: G2-1802-569-40  
 CATALOG NUMBER: 203-SS-8LED4025-12-CS-DIFF

**COEFFICIENT OF UTILIZATION - ZONAL CAVITY METHOD:**

RF	20				20				20				20				20	
RC	80				70				50				30				10	0
RW	70	50	30	10	70	50	30	10	50	30	10	50	30	10	50	30	10	0
RCR																		
0	119	119	119	119	116	116	116	116	111	111	111	106	106	106	102	102	102	100
1	114	112	109	107	112	109	107	106	105	104	102	102	100	99	98	97	96	95
2	109	105	101	98	107	103	100	97	100	97	95	97	95	93	94	93	91	89
3	105	99	94	91	103	98	93	90	95	92	89	93	90	87	90	88	86	85
4	100	94	89	85	99	92	88	85	90	87	84	88	85	83	87	84	82	80
5	96	89	84	80	95	88	83	80	86	82	79	85	81	78	83	80	78	76
6	92	85	79	76	91	84	79	75	82	78	75	81	77	74	80	77	74	73
7	89	81	75	72	87	80	75	72	79	74	71	78	74	71	77	73	71	69
8	85	77	72	68	84	77	72	68	76	71	68	75	71	68	74	70	68	66
9	82	74	69	65	81	73	69	65	73	68	65	72	68	65	71	67	65	64
10	79	71	66	63	78	71	66	63	70	65	62	69	65	62	68	65	62	61

**AVERAGE LUMINANCE (cd/sqm):**

	0°
0°	355233
5°	329351
10°	266026
15°	195120
20°	131786
25°	83835
30°	48995
35°	25899
40°	14169
45°	7675
50°	5373
55°	4301
60°	2960
65°	2335
70°	1443
75°	1906
80°	2841
85°	0



TEST NUMBER: G2-1802-569-40  
 CATALOG NUMBER: 203-SS-8LED4025-12-CS-DIFF

**ZONAL LUMENS:**

Zone	Lumens	% Fixture
0°-10°	59.1	21.0
10°-20°	104.7	37.2
20°-30°	71.2	25.3
30°-40°	28.9	10.3
40°-50°	9.6	3.4
50°-60°	4.5	1.6
60°-70°	2.2	0.8
70°-80°	1.1	0.4
80°-90°	0.1	0.0
90°-100°	0.0	0.0
100°-110°	0.0	0.0
110°-120°	0.0	0.0
120°-130°	0.0	0.0
130°-140°	0.0	0.0
140°-150°	0.0	0.0
150°-160°	0.0	0.0
160°-170°	0.0	0.0
170°-180°	0.0	0.0
0°-30°	235.0	83.5
0°-40°	263.9	93.8
0°-60°	278.0	98.8
0°-90°	281.4	100.0
90°-120°	0.0	0.0
90°-150°	0.0	0.0
90°-180°	0.0	0.0
0°-180°	281.4	100.0

**CANDELA DISTRIBUTION:**

	0°	Flux
0°	720	
5°	665	59
15°	382	105
25°	154	71
35°	43	29
45°	11	10
55°	5	4
65°	2	2
75°	1	1
85°	0	0
90°	0	



TEST NUMBER: G2-1802-569-40  
CATALOG NUMBER: 203-SS-8LED4025-12-CS-DIFF

**CANDELA DISTRIBUTION (FULL):**

0°	
0°	720
1°	715
2°	707
3°	696
4°	683
5°	665
6°	644
7°	619
8°	591
9°	561
10°	531
11°	499
12°	469
13°	439
14°	410
15°	382
16°	353
17°	326
18°	300
19°	276
20°	251
21°	228
22°	208
23°	188
24°	170
25°	154
26°	138
27°	124
28°	111
29°	98
30°	86
32.5°	61
35°	43
37.5°	31
40°	22
42.5°	16
45°	11
47.5°	9
50°	7
52.5°	6
55°	5
57.5°	4
60°	3
62.5°	3
65°	2



TEST NUMBER: G2-1802-569-40  
CATALOG NUMBER: 203-SS-8LED4025-12-CS-DIFF

**CANDELA DISTRIBUTION (continued):**

	0°
67.5°	2
70°	1
72.5°	1
75°	1
77.5°	1
80°	1
82.5°	0
85°	0
87.5°	0
90°	0

(END OF REPORT)